

Childe Hassam

1859-1935 | American



The Bather

M.S. Rau
FINE ART • ANTIQUES • JEWELS

TABLE OF CONTENTS

Painting Overview.....	4
Auction Comparables	6
Museum Comparables	7



Oil on Canvas | Circa 1905

Signed "Childe Hassam" (lower right)

Canvas: 24 1/2" high x 20 1/8" wide | 62.23 x 51.12 cm

Frame: 35 7/8" high x 31 1/4" wide x 3 1/4" deep

91.12 cm x 79.38 cm x 8.26 cm

“

*The true impressionism
is realism. So many
people do not observe.*

- Childe Hassam

”

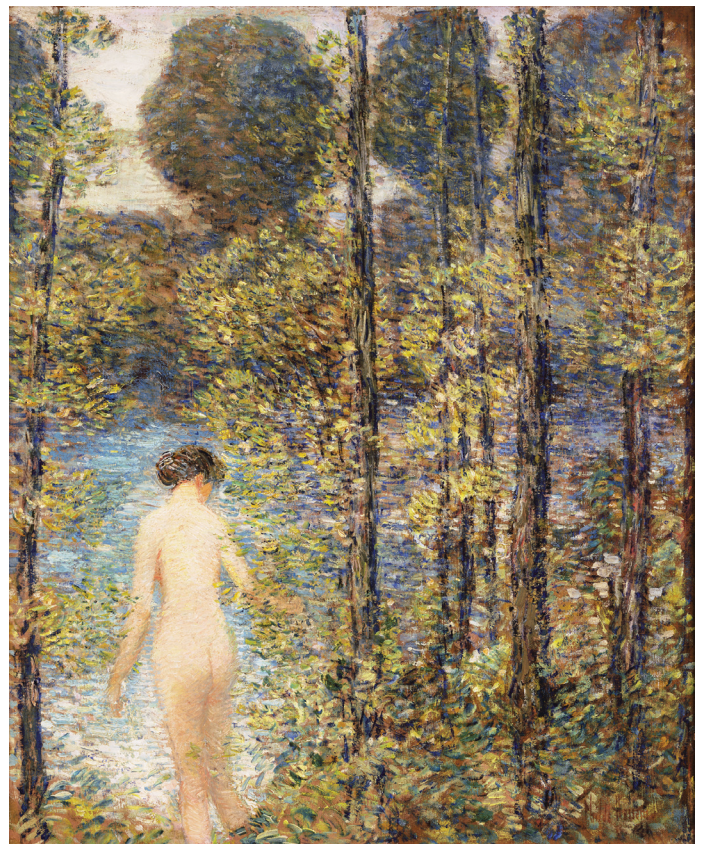


Considered by many to be America's foremost Impressionist painter, Childe Hassam composed his tranquil and intimate oil on canvas *The Bather* in the early years of the 20th century. The creation of the artwork aligns with a period of Hassam's career where the artist's palette was transforming, matching ever closer with the pale and pastel hues of French Impressionists like Claude Monet. Even the subject — a nude woman — represents a greater alignment with the Impressionist project, as artists of the movement and their non-mythological and non-biblical nudes still generated cries of indecency. With Hassam's signature brushwork and attention to color, *The Bather* serves as a dream-like vision, serene and sensuous, of a young woman bathing in a lush forest.

While the artist's skill for landscape painting is on display, it is Hassam's command of form, light and color that brings this canvas to life. He creates a captivating composition, placing the nude subject in the bottom left of the canvas. The soft, undulating curves of the woman's body in contrapposto and the glow of her fair skin are balanced by the strong verticals and deep earth tones of the tall trees to her right. Hassam delicately frames the nude in the vivid blues of the distant water, building luminous color that further draws the viewer's eye and results in a somewhat voyeuristic appeal — endowing his nude with both a natural innocence and an intentional sensuality.

Born in Dorchester, Massachusetts, Childe Hassam began his artistic career as a freelance illustrator, working for national publications such as *Harper's Weekly*, *Scribner's Monthly* and *The Century*. His first solo exhibition of watercolors took place in Boston in 1883, and he quickly catapulted onto the international scene, winning a bronze medal at the Exposition Universelle in Paris in 1889. The year before the present work was created, he received the Webb Prize from the Society of American Artists for another landscape

painted at Gloucester. Hassam would receive numerous other awards throughout his career, most notably the Gold Medal for Distinguished Services to Fine Art from the American Dealers Association. A true master, Hassam depicted a way of life characteristic of both American and French society, and his work elucidates a critical chapter in American art history. Today, his work resides in the Oval Office of the White House and in numerous important museums, including the Metropolitan Museum of Art in New York, the National Gallery of Art in Washington, D.C. and the Museum of Fine Arts in Boston, among others. ●



OVERVIEW

PROVENANCE

Private Collection of William Young Marsh, Esq., Montreal, Canada

Private Collection, Montreal, Canada

Walter Klinkhoff Gallery, Montreal, Canada

Private Collection, Palm Beach, Florida

Christie's, New York, 23 May 1996, lot 79, sold by the above

Private Collection, Tennessee

M.S. Rau, New Orleans

LITERATURE

This painting will be included in Stuart P. Feld's and Kathleen M. Burnside's forthcoming catalogue raisonné of the artist's work, no. 1905.019



AUCTION COMPARABLES

	1	Hassam Childe	<p>Title Conversation on the Avenue</p> <p>Description Childe Hassam (1859-1935) Conversation on the Avenue signed and dated</p> <p>Medium oil on panel</p> <p>Year of Work 1892</p> <p>Size Height 16.1 in.; Width 12.6 in. / Height 41 cm.; Width 32 cm.</p> <p>Misc. Signed</p> <p>Sale of Christie's New York: Tuesday, May 22, 2018 [Lot 00016] American Art</p> <p>Estimate 1,500,000 - 2,500,000 USD</p> <p>Sold For 2,412,500 USD Premium</p>
	2	Hassam Childe	<p>Title In the Doorway</p> <p>Description Childe Hassam (1859-1935) In the Doorway signed and dated twice 'Childe Hassam</p> <p>Medium oil on board</p> <p>Year of Work 1888</p> <p>Size Height 18 in.; Width 14.8 in. / Height 45.7 cm.; Width 37.5 cm.</p> <p>Misc. Signed</p> <p>Sale of Christie's New York: Tuesday, November 22, 2016 [Lot 00030] American Paintings</p> <p>Estimate 800,000 - 1,200,000 USD</p> <p>Sold For 967,500 USD Premium</p>
	3	Hassam Childe	<p>Title In a French Garden</p> <p>Description signed and dated 'Childe Hassam 1897' with artist's crescent device (lower</p> <p>Medium oil on canvas</p> <p>Year of Work 1897</p> <p>Size Height 25.7 in.; Width 21.2 in. / Height 65.4 cm.; Width 53.9 cm.</p> <p>Misc. Signed</p> <p>Sale of Christie's New York: Thursday, May 23, 2013 [Lot 00036] American Art</p> <p>Estimate 800,000 - 1,200,000 USD</p> <p>Sold For 963,750 USD Premium</p>
	4	Hassam Childe	<p>Title Lady in a Garden</p> <p>Description signed 'Childe Hassam' (lower left) oil on canvas 18 x 15 in. Painted</p> <p>Medium oil on canvas</p> <p>Year of Work Circa 1890</p> <p>Size Height 18 in.; Width 15 in. / Height 45.7 cm.; Width 38.1 cm.</p> <p>Misc. Signed</p> <p>Sale of Bonhams New York: Wednesday, November 19, 2014 [Lot 00049] American Art</p> <p>Estimate 800,000 - 1,200,000 USD</p> <p>Sold For 905,000 USD Premium</p>



Childe Hassam | *The Lady of the Gorge*

1912

Medium: Oil on canvas

Dimensions: 22^{1/8} x 24 inches | 56.2 x 60.96 cm



MFABoston

Museum of Fine Arts, Boston
Boston, MA, United States



Childe Hassam | *Nude Seated*

1912

Medium: Oil on canvas

Dimensions: 24 x 22 inches | 61 x 55.9 cm



**National
Gallery of Art**

National Gallery of Art
Washington D.C., United States

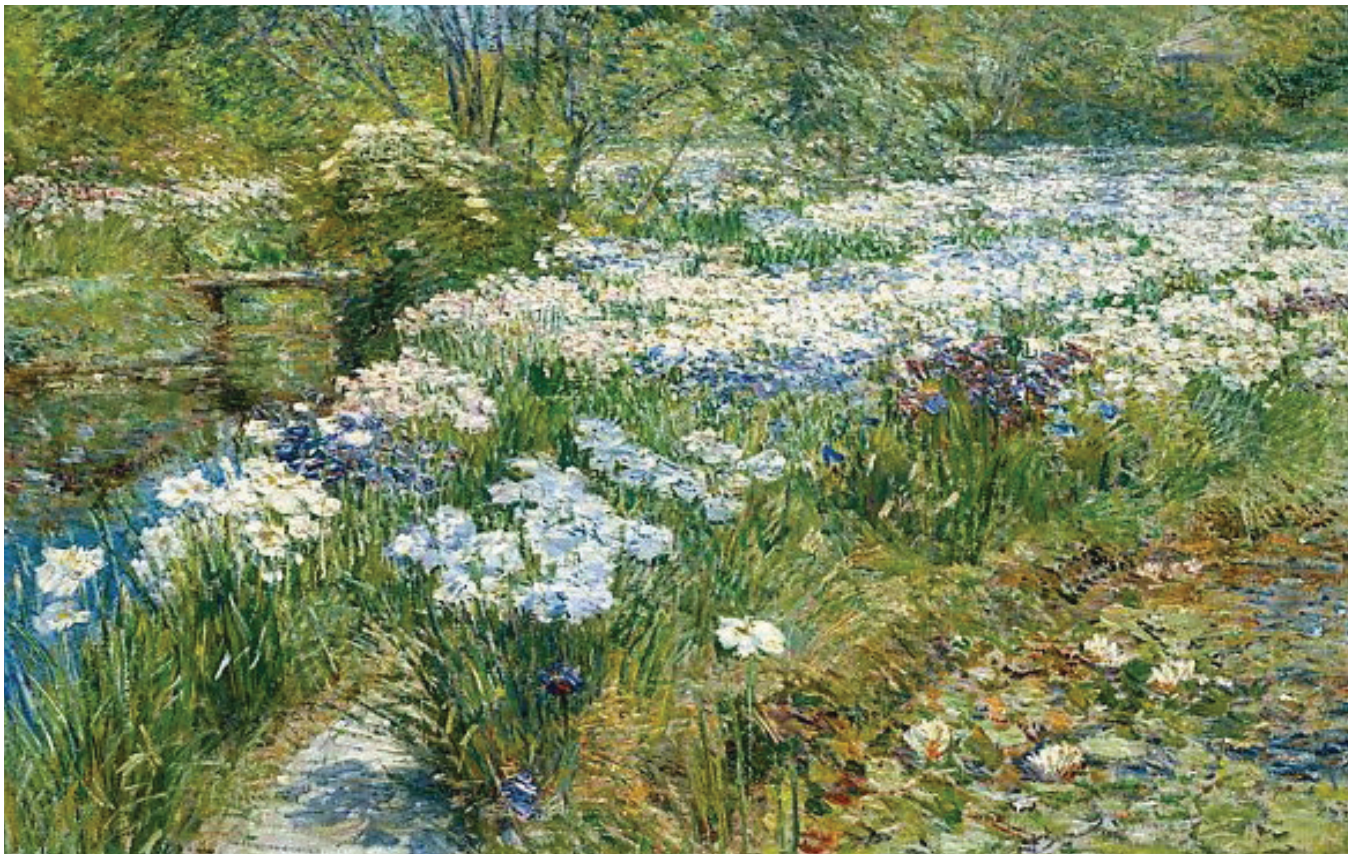


Childe Hassam | *The Water Garden*

1909

Medium: Oil on canvas

Dimensions: 24 x 36 inches | 61 x 91.4 cm



Metropolitan Museum of Art
New York, United States



Childe Hassam | *The Almond Tree*

n.d.

Medium: Etching on paper



Art Institute of Chicago
Chicago, IL, United States



M.S.  Rau
FINE ART • ANTIQUES • JEWELS

msrau.com | 504-826-8856