

Winston Churchill

1874-1965 | British



Coast Scene near Lympne

TABLE OF CONTENTS

Painting Overview.....	4
Literature	6
Auction Comparables	13
Museum Comparables	14

Oil on canvas | Circa 1930

Canvas: 20" high x 24" wide | 50.8 x 60.96 cm

Frame: 27" high x 31 1/4" wide x 2" deep | 68.58 x 79.38 x 5.08 cm



“

*Success is not final,
failure is not fatal,
it is the courage to
continue that counts.*

- Sir Winston Churchill

”



Immediately recognizable as one of the most important statesmen in world history, Sir Winston Churchill also pursued the art of painting for more than 40 years.

A particularly fine piece from the statesman's oeuvre, this masterpiece entitled *Coast Scene near Lympne* is rendered in fluid brushstrokes and a vivid array of hues.

Churchill often leveraged his elite connections to navigate the complex political landscape of the 1920s and 1930s. Many of these invaluable social interactions occurred at the setting of this magnificent landscape painting: the distinguished Port Lympne estate. Owned by Sir Philip Sassoon, an influential member of the renowned Rothschild family, the estate was a nexus for the era's intellectual and political luminaries.

Located atop the picturesque cliffs overlooking the Romney Marsh, Port Lympne was built upon land once settled by the ancient Romans and welcomed the likes of T.E. Lawrence, the Duke and Duchess of Windsor, Charlie Chaplin and the Churchills. The beautiful coastal setting provided a wealth of inspiration for the statesman, and this composition showcases the splendor of the estate's panoramic views.

Painted from the vantage point of the cliffside estate, Churchill renders a moody swirl of gray and white clouds gathering over the bay. Tranquil water laps at the shoreline, painted in a mix of verdant and sandy tones. The juxtaposition of the brooding clouds and calm waters imbues the work with a reflective and introspective quality, perhaps a manifestation of Churchill's inner thoughts as global political tensions were never far from his mind, even at this waterfront retreat.

Painting was a dominating passion for Churchill in the last half of his life. There is little evidence that he had any artistic training prior to his 40s. In fact, his wife Clementine mentioned at one point that before he began painting, Churchill had hardly visited an art museum, much less created art. He first began painting following a personal and political disaster — the Dardanelles campaign in 1915. He is quoted as telling the painter Sir John Rothenstein: “If it weren't for painting, I couldn't live; I couldn't bear the strain of things.”

Churchill painted roughly 500 works, approximately 350 of which are housed in Churchill's garden studio at Chartwell. Only a few others were given to friends and remain in private collections. This painting is illustrated prominently in the preeminent publication of Churchill's paintings. ●



PROVENANCE

By direct family descent from the artist

Sale, Sotheby's London, 21 July 2005

M.S. Rau, New Orleans

LITERATURE

David Coombs and Minnie Churchill, *Sir Winston Churchill's life Through His Paintings*, Chaucer Press, London, 2003, no. C290, fig. 162, p. 91 (illustrated)

Mary Soames, *Winston Churchill: His Life as a Painter: A Memoir by His Daughter*, Houghton Mifflin, 1990, p. 47 (illustrated)

EXHIBITED

Chartwell, *The Studio* loan exhibit



Sir WINSTON
CHURCHILL

HIS LIFE AND HIS PAINTINGS



BY DAVID COOMBS WITH MINNIE CHURCHILL



FOREWORD BY MARY SOAMES

David Coombs and Minnie Churchill, *Sir Winston Churchill's life Through His Paintings*,
Chaucer Press, London, 2003, no. C290, fig. 162, p. 91 (illustrated)



VILLA JULIE COLLEGE LIBRARY
STEVENSON MD 21153

Sir WINSTON
CHURCHILL

His Life and His Paintings

David Coombs
and Minnie S. Churchill

Foreword by Mary Soames



RUNNING PRESS
PHILADELPHIA • LONDON

David Coombs and Minnie Churchill, *Sir Winston Churchill's life Through His Paintings*,
Chaucer Press, London, 2003, no. C290, fig. 162, p. 91 (illustrated)





Fig 161 (C 80) above
View over the Lympne marshes. This painting was given by Winston to his son, Randolph.

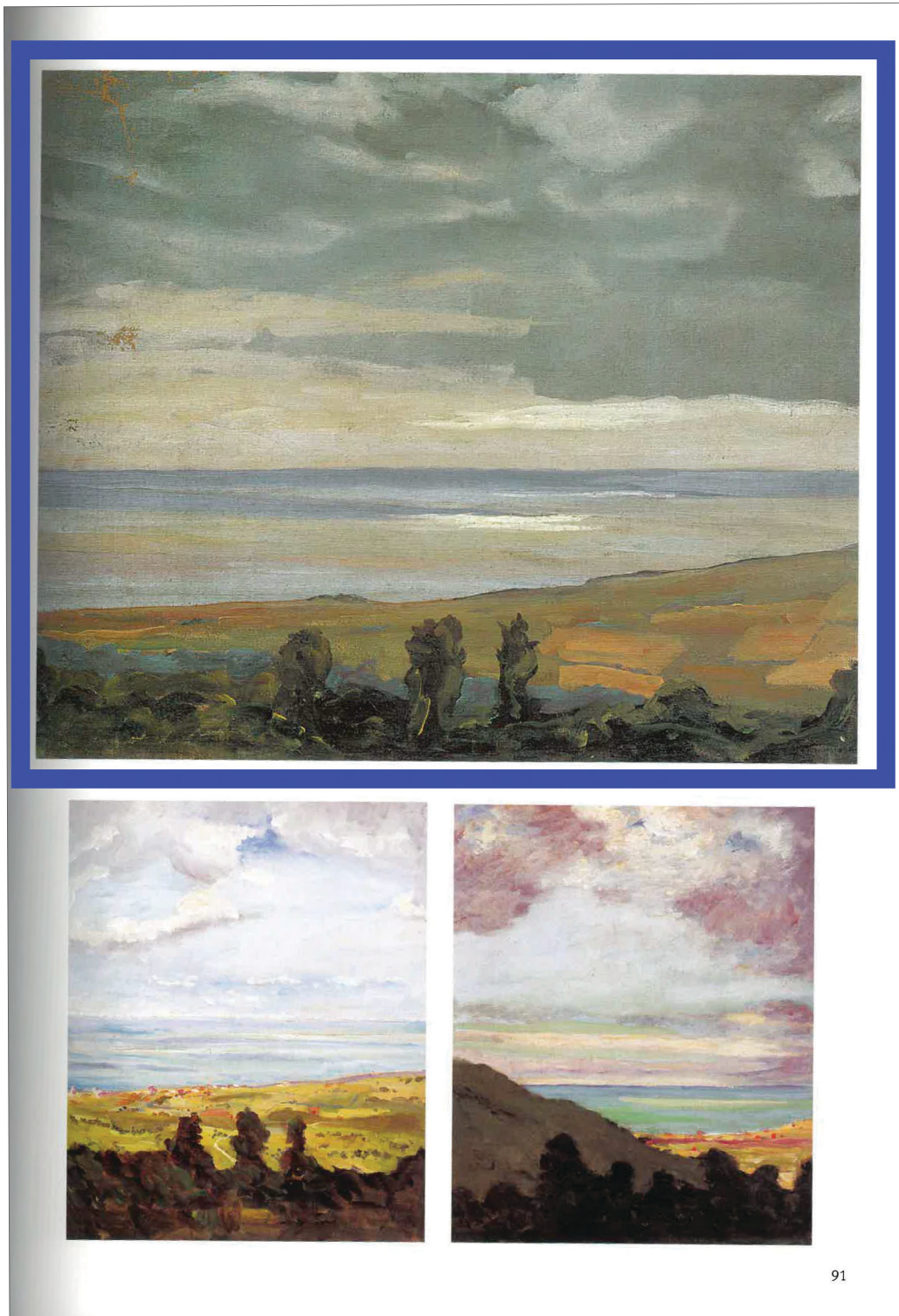
Fig 162 (C 290) opposite page top
Coast scene near Lympne.

Fig 163 (C 289) opposite page below left
Coast scene near Lympne.

Fig 164 (C 293) opposite page below right
View of the sea from a clifftop at Lympne.

variety the single triplex theme of the Nile, the desert, and the sun; or Palestine, a land of rare beauty - the beauty of the turquoise and opal - which well deserves the attention of some real artist, and has never been portrayed to the extent that it is due. And what of India? Who has ever interpreted its lurid splendours? But after all, if only the sun will shine, one does not need to go beyond one's own country. There is nothing more intense than the burnished steel and gold of a Highland stream; and at the beginning and close of almost every day the Thames displays to the citizens of London glories and delights which one must travel far to rival.

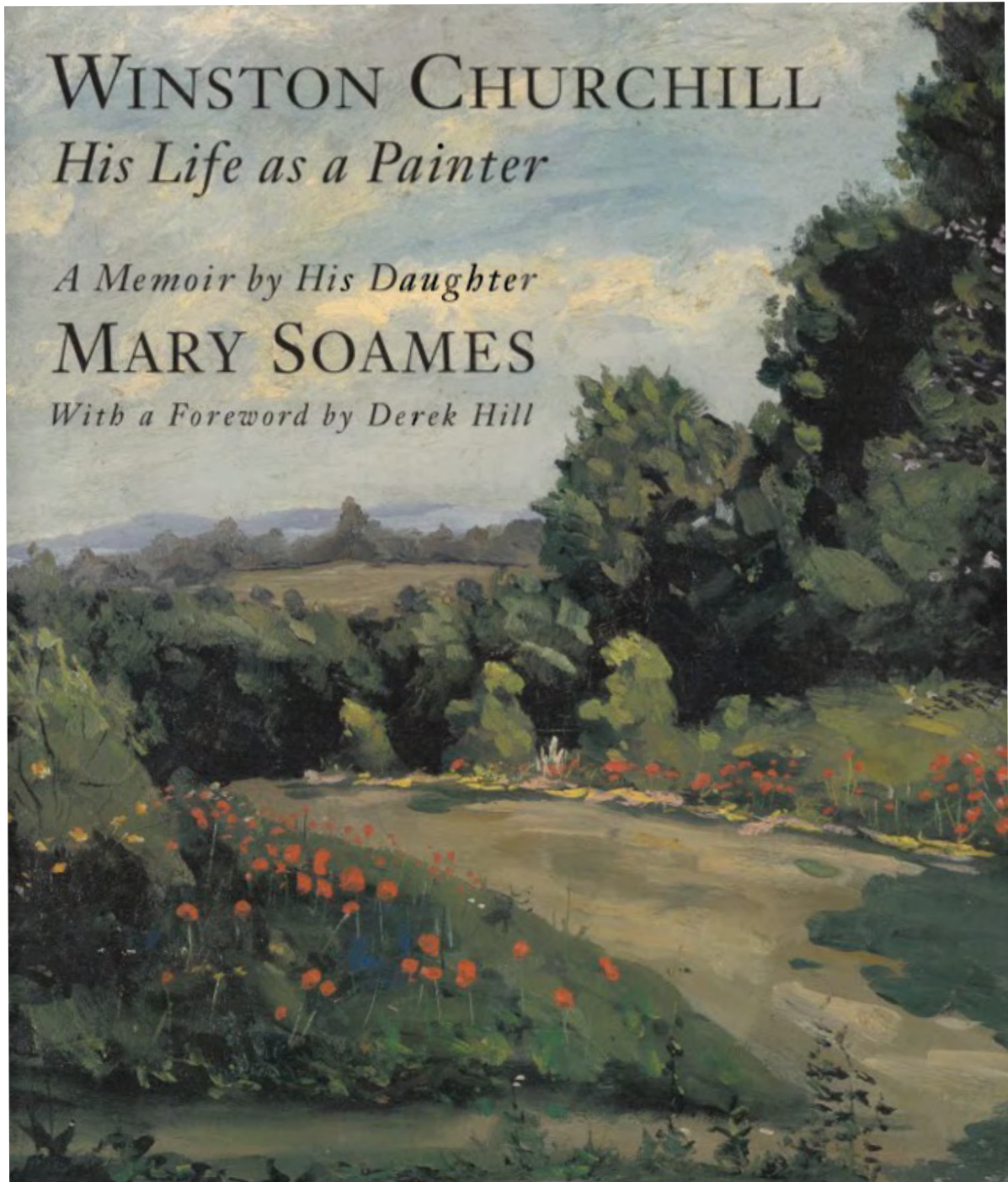
I end where I began; I hope sincerely that these notes and sketches may encourage others to find out whether they have not got within them that love of colour and faculty of observation which will enable them to enrich their leisure with the delightful amusement of painting. At any rate I shall dwell in the comfortable expectation of stirring some slumbering genius into action, or at least of investing a modest life with a new sense of fullness, security and independence.



91

David Coombs and Minnie Churchill, *Sir Winston Churchill's life Through His Paintings*, Chaucer Press, London, 2003, no. C290, fig. 162, p. 91 (illustrated)





Mary Soames, *Winston Churchill: His Life as a Painter: A Memoir by His Daughter*,
Houghton Mifflin, 1990, p. 47 (illustrated)



WINSTON
CHURCHILL
HIS LIFE AS A PAINTER

*

A Memoir by His Daughter
MARY SOAMES

With a Foreword by Derek Hill



Houghton Mifflin Company · Boston
1990

Mary Soames, *Winston Churchill: His Life as a Painter: A Memoir by His Daughter*,
Houghton Mifflin, 1990, p. 47 (illustrated)



Chapter Two





12. *Coastal scene near Lympne, Kent, 1920s*. Collection: Mrs Arabella Churchill-MacLeod; on loan to the National Trust, Chartwell

47

Mary Soames, *Winston Churchill: His Life as a Painter: A Memoir by His Daughter*, Houghton Mifflin, 1990, p. 47 (illustrated)



AUCTION COMPARABLES

	1	<p>Winston Churchill</p> <p>Title Tower of the Koutoubia Mosque</p> <p>Description SIR WINSTON CHURCHILL, O.M., R.A. (1874-1965) Tower of the Koutoubia Mosquesigned</p> <p>Medium oil on canvas</p> <p>Year of Work 1943</p> <p>Size Height 18 in.; Width 24 in. / Height 45.7 cm.; Width 61 cm.</p> <p>Misc. Signed</p> <p>Sale of Christie's London: Monday, March 1, 2021 [Lot 00009] Modern British Art Evening Sale</p> <p>Estimate 1,500,000 - 2,500,000 GBP (2,090,592 - 3,484,320 USD)</p> <p>Sold For 8,285,000 GBP Premium (11,547,038 USD)</p>
	2	<p>Winston Churchill</p> <p>Title The goldfish pool at Chartwell</p> <p>Description oil on canvas63.5 by 76.5cm.; 25 by 30in.Executed in 1932.Catalogue NoteWe</p> <p>Medium oil on canvas</p> <p>Year of Work 1932</p> <p>Size Height 25 in.; Width 30.1 in. / Height 63.5 cm.; Width 76.5 cm.</p> <p>Sale of Sotheby's London: Wednesday, December 17, 2014 [Lot 00181] Daughter of History: Mary Soames and the Legacy of Churchill</p> <p>Estimate 400,000 - 600,000 GBP (625,978 - 938,967 USD)</p> <p>Sold For 1,762,500 GBP Premium (2,758,216 USD)</p>
	3	<p>Winston Churchill</p> <p>Title Scene at Marrakech</p> <p>Description SIR WINSTON CHURCHILL, O.M., R.A. (1874-1965) Scene at Marrakechsigned with initi</p> <p>Medium oil on canvas</p> <p>Year of Work Circa 1935</p> <p>Size Height 23.7 in.; Width 36.4 in. / Height 60.3 cm.; Width 92.4 cm.</p> <p>Misc. Signed</p> <p>Sale of Christie's London: Monday, March 1, 2021 [Lot 00003] Modern British Art Evening Sale</p> <p>Estimate 300,000 - 500,000 GBP (418,118 - 696,864 USD)</p> <p>Sold For 1,882,500 GBP Premium (2,623,693 USD)</p>
	4	<p>Winston Churchill</p> <p>Title The Bridge at Aix-en-Provence</p> <p>Description SIR WINSTON CHURCHILL, O.M., R.A. (1874-1965) The Bridge at Aix-en-Provencesigned</p> <p>Medium oil on canvas</p> <p>Year of Work 1948</p> <p>Size Height 22 in.; Width 28 in. / Height 55.9 cm.; Width 71.2 cm.</p> <p>Misc. Signed</p> <p>Sale of Christie's London: Wednesday, October 20, 2021 [Lot 00011] Modern British and Irish Art Evening Sale</p> <p>Estimate 1,500,000 - 2,500,000 GBP (2,073,255 - 3,455,425 USD)</p> <p>Sold For 1,702,500 GBP Premium (2,353,144 USD)</p>



Winston Churchill | *Coast Scene near Port Lympne, Kent*

Circa 1930

Medium: Oil on canvas



National Trust - Chartwell
Kent, England



M.S.  Rau
FINE ART • ANTIQUES • JEWELS

msrau.com | 504-826-8856