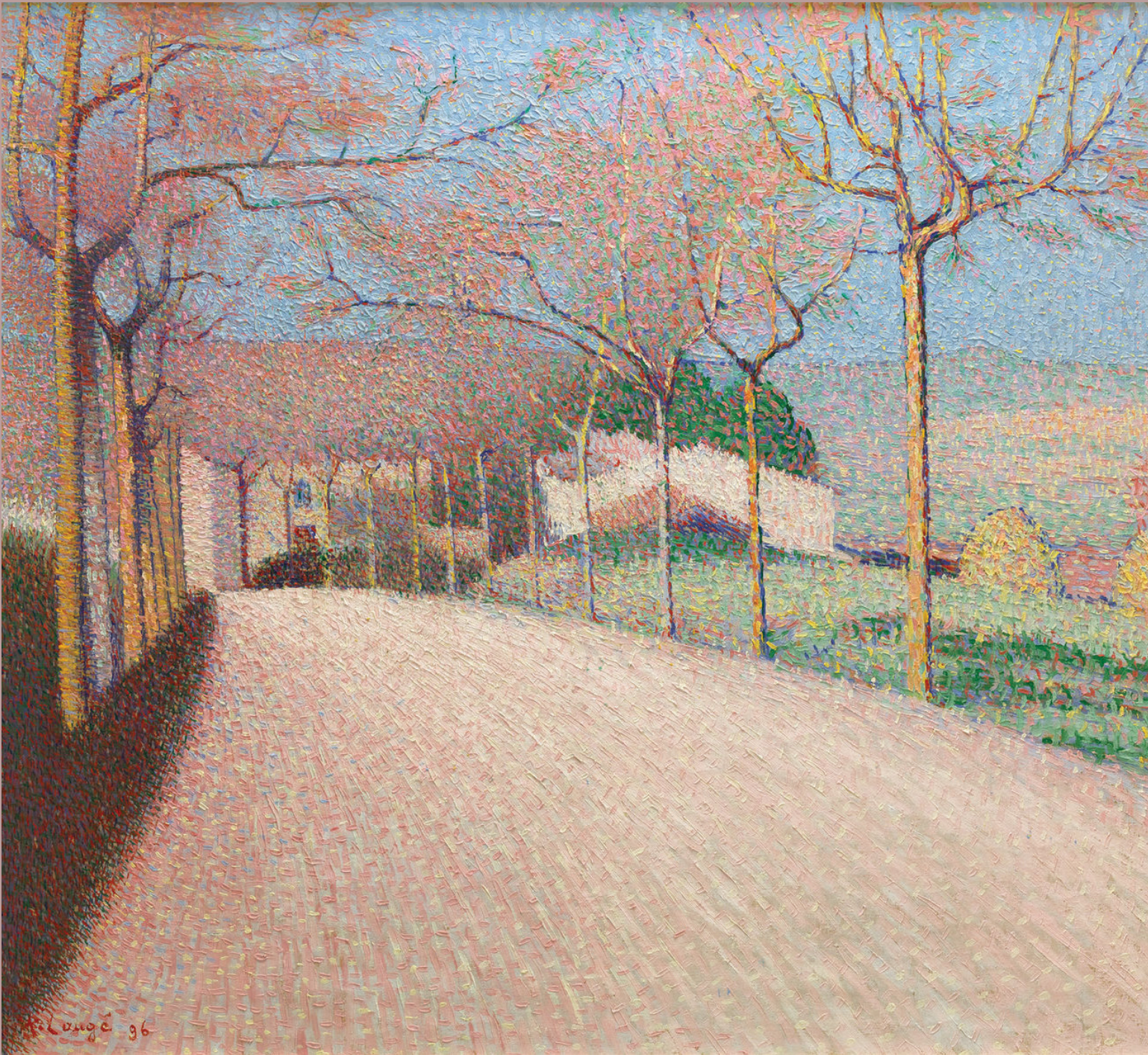


# Achille Laugé

1861-1944 | French



*The Garden Near Cailhau*

# TABLE OF CONTENTS

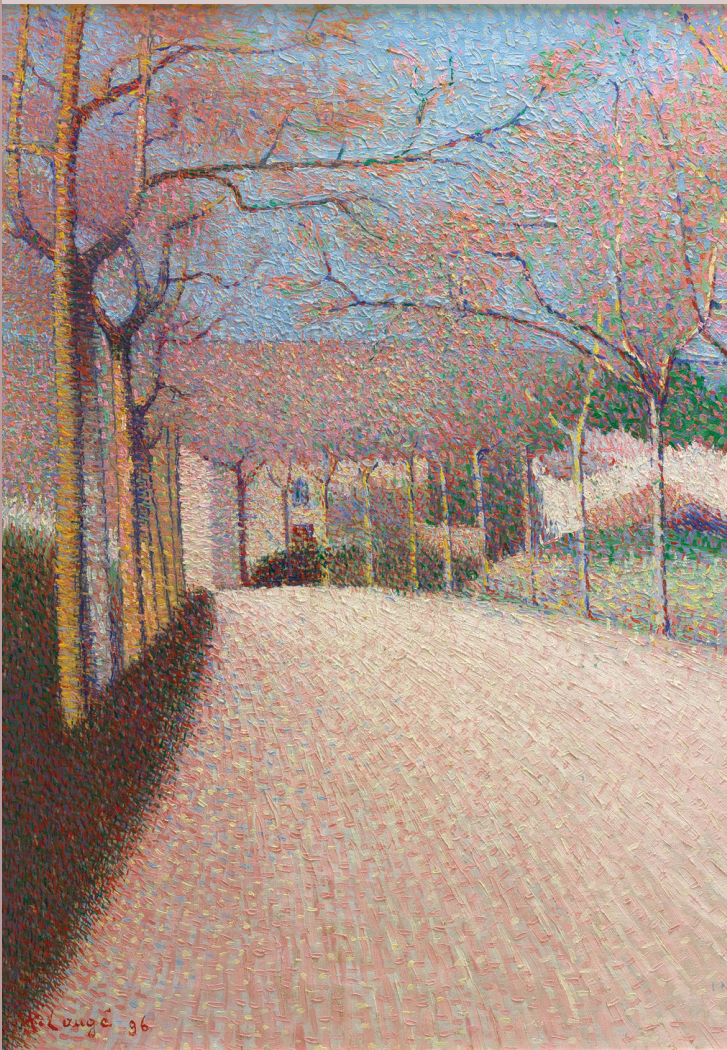
Painting Overview.....	4
Letter of Authenticity .....	6
Auction Comparables .....	7
Museum Comparables .....	8

Oil on canvas | Circa 1896

Signed and dated "A. Laugé 96" (lower left)

Canvas: 25 1/2" high x 32" wide | 64.77 cm x 81.28 cm

Frame: 31 1/2" high x 37 7/8" wide x 1 1/2" deep  
80.01 cm x 96.2 cm x 3.81 cm



“

*Laugé's art is one of  
great sensitivity and  
controlled reason; he  
is a master of light.*

- Antoine Bourdelle  
French artist and peer, June 1927

”



**T**his incredible work by Achille Laugé entitled *The Garden Near Cailhau* showcases the masterful artist at his very best. During his lifetime, Achille Laugé was celebrated by his peers and the public alike for producing dazzling works with subtly divided southern light, pure tones and rigorous geometry. His reputation only continued to grow after his death, and today the art market recognizes him as a master of Neo-Impressionism. Though his command of the pointillist and divisionist styles often draws comparison to his Neo-Impressionist peers like Seurat and Signac, Laugé approached the style with his own unique sensibility. Laugé's oeuvre showcases his taste for monumental, static art that emphasizes rhythm, line and purity. More personally, Laugé was deeply inspired by the natural beauty and familiarity of his hometown.

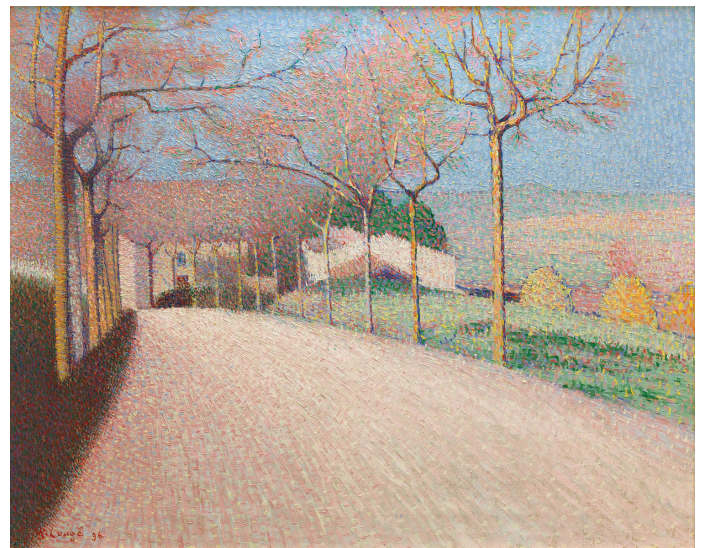
*The Garden Near Cailhau* depicts a quintessential scene from the artist — a touching tribute to his beloved home. Featuring a road flanked by trees and bathed in sunlight, the flowering trees that line the path merge with the pointillist dots to create a stunning visual effect. The tree-lined path recedes into the distance towards the commune of Cailhau on top of a hill. The composition masterfully combines all the principles of divisionism while staying true to Laugé's roots. Marked by a luminous color palette and a robust paint application that causes the scene to emerge in three dimensions, it is among the finest of Laugé's output, and the canvas remains in its original unlined state in perfect condition.

The son of a farmer, Achille Laugé initially opted for a career as a pharmacist before giving up his studies to enroll at the Toulouse School of Fine Arts in 1876. During his apprenticeship, he met Antoine Bourdelle, Henri Martin and Henri Marre, who encouraged him to go to Paris in 1882

to study at the École des Beaux-Arts. It was in Paris in the early 1890s that Laugé discovered the paintings of Seurat and Signac.

He was encouraged by Bourdelle, who told him, "You bring a very personal vision, a great deal of serene logic and a beautiful gift of unity in the love of the luminous air that reigns even in your shadows" — very high praise from a peer! After his sojourn to Paris, Laugé returned to his childhood home of Cailhau near Carcassonne in the Aude, establishing himself permanently in relative isolation and only exhibiting on the rare occasion at the *Salon des Indépendants* in Paris. It was within this strategic isolation that the artist refined his point of view and honed his individual stylistic language.

For an artist who preferred to paint quietly in the beauty and tranquillity of Cailhau, away from the public eye, Laugé is now firmly recognized as an important and pivotal artist of his time, with his works held in several major museums, including the Musée d'Orsay, the Louvre and the Museum of Fine Arts, Houston. ●



PROVENANCE

Acquired directly from the artist

Private Collection

Private Collection, Paris

M.S. Rau, New Orleans

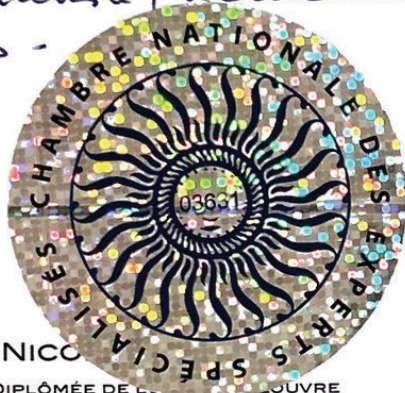


## LETTER OF AUTHENTICITY

Certificat n° 1115

Dans l'état actuel de nos connaissances, nous  
pensons que L'Hort (huile sur toile, 65x81 cm, signée  
en bas à gauche et datée '96) est une œuvre du  
peintre Achille LAUGÉ (1861-1944) -  
Cet œuvre sera insérée dans le catalogue raisonné  
de l'artiste, actuellement en préparation par nos  
soins -

Fait à Paris, le 27 novembre 2022



NICO  
DIPLOMÉE DE L'ŒUVRE  
CONFÉRENCIÈRE, COMMISSAIRE D'EXPOSITION  
EXPERTISE : ACHILLE LAUGÉ (1861-1944)

Membre expert CNES

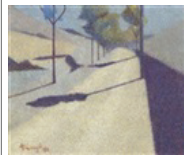
*Nicoletamburini*

6, RUE COËTLOGON  
75006 PARIS

01 45 48 31 78  
nicoletamburini@aol.com



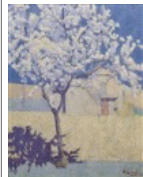
# AUCTION COMPARABLES



1

**Achille Laugé**

**Title** La route  
**Description** Achille Laugé (1861-1944)La routesigned and dated 'A.Laugé. 93' (lower left)  
**Medium** oil on canvas  
**Year of Work** 1893  
**Size** Height 15.7 in.; Width 19.7 in. / Height 40 cm.; Width 50 cm.  
**Misc.** Signed  
**Sale of** Christie's London: Wednesday, March 1, 2017 [Lot 00523] Impressionist and Modern Art Day Sale  
**Estimate** 300,000 - 500,000 GBP (369,549 - 615,915 USD)  
**Sold For** 809,000 GBP Premium (996,550 USD)



2

**Achille Laugé**

**Title** L'arbre en Fleur  
**Description** Signed A. Laugé and dated 93 (lower right)Oil on canvas23 3/8 by  
**Medium** oil on canvas  
**Year of Work** 1893  
**Size** Height 23.4 in.; Width 19.3 in. / Height 59.4 cm.; Width 49 cm.  
**Misc.** Signed  
**Sale of** Sotheby's New York: Thursday, November 7, 2013 [Lot 00127] Impressionist & Modern Art Day Sale  
**Estimate** 200,000 - 300,000 USD  
**Sold For** 629,000 USD Premium

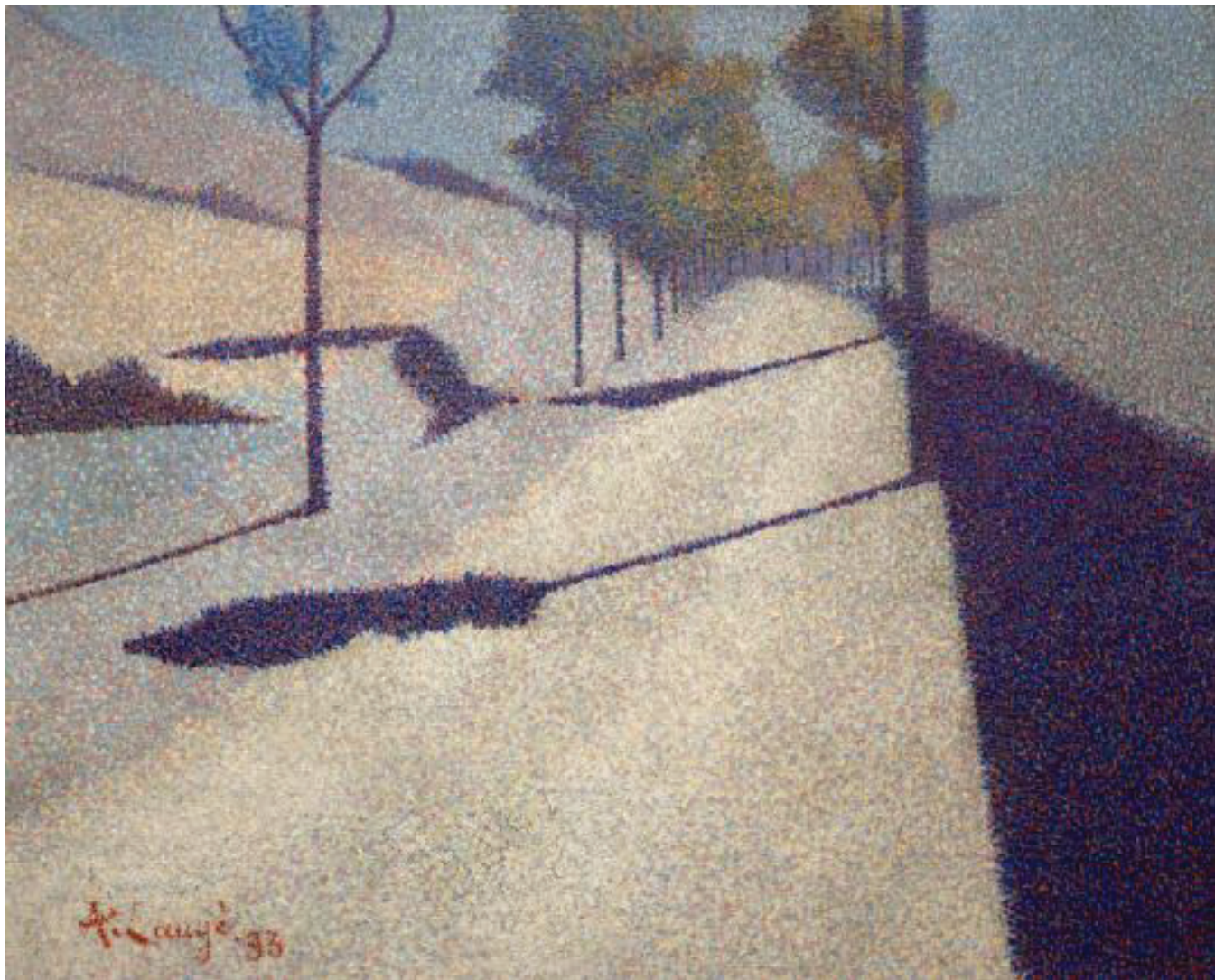


Achille Laugé | *La route*

1893

**Medium:** Oil on canvas

**Dimensions:** 15<sup>3/4</sup> x 19<sup>3/4</sup> inches | 40 cm x 50.2 cm





Achille Laugé | *Paysage de la Gardie, près de Cailhau*

1902

**Medium:** Oil on canvas

**Dimensions:** 23<sup>1/4</sup> x 31<sup>3/4</sup> inches | 59 cm x 80.5 cm



M  
O

Musée d'Orsay  
Paris, France



## Achille Laugé | *La route au lieu-dit l'Hort*

1896-98

**Medium:** Oil on canvas

**Dimensions:** 37<sup>1/2</sup> x 46 inches | 95 cm x 117 cm



Musée Fabre  
Montpellier, France



*M.S.  Rau*  
FINE ART • ANTIQUES • JEWELS

---

[msrau.com](http://msrau.com) | 504-826-8856