

Jean Metzinger



1883-1956 | FRENCH

Port du Croisic

TABLE OF CONTENTS

Painting Overview.....	4
Literature	6
Exhibited.....	7
Auction Comparables	12
Museum Comparables	14

Oil on canvas | Painted 1905
Signed "J. Metzinger" (lower right)
Canvas: 24 3/4" high x 35 1/2" wide | 62.79 x 90.17 cm
Frame: 35 1/4" high x 43 3/4" wide x 2" deep
89.54 x 113.13 x 5.08 cm



“

A painting by Metzinger
always contains its own
explanation... and is
something unique, it seems
to me, in the history of art.

– Guillaume Apollinaire

”



The opportunity to acquire a significant pointillist painting by Jean Metzinger is exceedingly rare, especially one showing his most desirable Mediterranean views. This painting, *Port du Croisic*, is a masterpiece of his revolutionary career.

As both a founding figure of Cubism and a masterful colorist, Metzinger bridged Neo-Impressionism and the avant-garde movements that came to define modern art. When Georges Seurat died in 1891, Divisionism lost its founder, but a new generation soon took up the mantle. A painter of exceptional intellect fascinated by geometry and mathematics, Metzinger helped give visual structure to modernism itself.

Every element of *Port du Croisic* demonstrates Metzinger's exceptional talent. With countless brilliant dabs of paint, the artist's rendering of atmosphere captures morning light with remarkable tranquility, while the vibrant fullness of the sea creates extraordinary depth. The composition pulses with life and energy through its bold tones and dynamic contrasts, particularly evident in the treatment of the sailboats in the foreground.

This pointillist painting was one of the artist's masterpieces. Metzinger exhibited it at the Salon

des Indépendants in 1905 and kept it in his personal collection for years, later gifting it to his friend, Monsieur Bertet. This work will also be included in Metzinger's forthcoming catalogue raisonné.

His stunning Post-Impressionist paintings such as this one are exceptionally difficult to find. In fact, the last one of this scale to come to market was this exact work of art, when it sold over a decade ago in a far weaker market for \$457,537. Almost all of Metzinger's pointillist paintings are in museums, including the Minneapolis Institute of Art, the Musée des Beaux-Arts de Nantes, the Rijksmuseum Kröller-Müller and the Musée d'Art moderne de Troyes.



PROVENANCE

Monsieur Bertet, Marseille (gift from the artist)

Rose Saporte-Bertet, Marseille (gift from the above)

Private collection (a gift from the above, 1953)

Private collection, since 2014

M.S. Rau, New Orleans

LITERATURE


This work will be included in the forthcoming catalogue raisonné, under no. AM-05-004

EXHIBITED

Paris, Grande Serre de l'Alma, Cours-la-Reine, *21^e Salon des Indépendants*, March-April 1905, p. 172, no. 2902


(Possibly) Paris, Galerie Berthe Weill, Exposition de peintures, November-December 1905, no. 51 (titled *Marine (Le Croisic)*)

Paris, Musée de la Poste and Musée de Lodève, *Gleizes, Metzinger, du Cubisme et après*, May 2012-November 2013 (illustrated in color, p. 57)




Jean Metzinger

[Home](#) [Catalogue Raisonné](#) [Jean Metzinger Monograph](#) [Digital Archive](#) [Contact](#)



Port du Croisic

Jean Metzinger Catalogue Raisonné



Number: AM-05-004 Jean Metzinger

Date: 1905

Title: *Port du Croisic*

Medium: Oil on canvas

Dimensions: 65 x 92 cm

Inscriptions: Signed (lower right)

Provenance: Monsieur Bertet, Marseille (gift of the artist).
Rose Saporte-Bertet, Marseille.
Christie's, Paris, 23-24 October 2014, lot 5

Exhibitions: Salon des Indépendants, Paris, March-April 1905, no. 2902.

Possibly Galerie Berthe Weill, Paris, 23 November-21 December 1905, cat. no. 51, titled *Marine (Le Croisic)*

L'Adresse, Musée de la Poste et Musée de Lodève, Gleizes, Metzinger, du Cubisme et après, Paris, May 2012 – November 2013, reproduced p. 57.

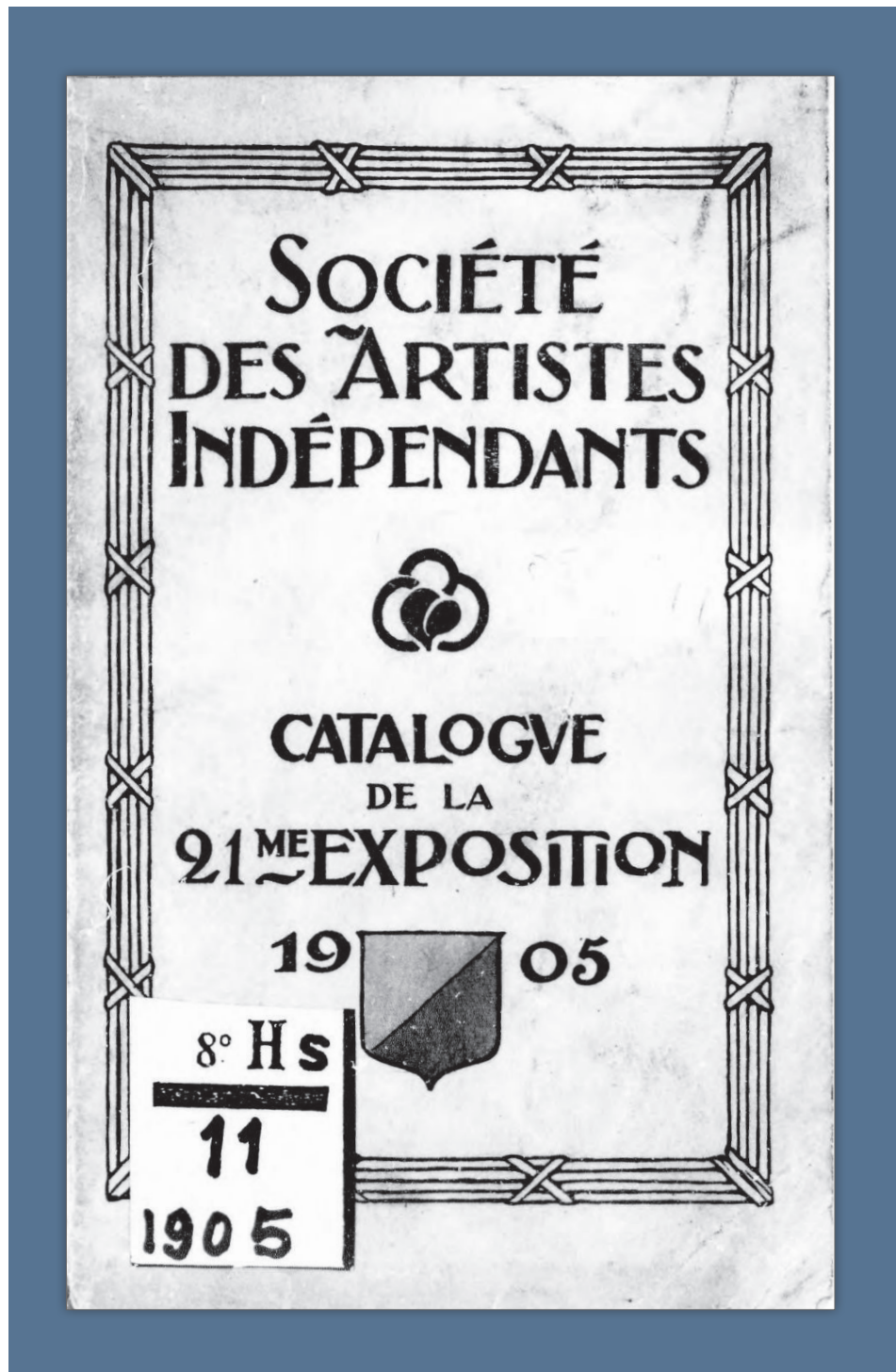
Notes: For a smaller version of this painting with dimensions 20 x 27 cm (perhaps a study), see Metzinger's 1905 *Port du Croisic* ([AM-05-004.1](#)).

There exists, or existed, another painting titled *Le Croisic (Le Port)* as well, measuring 54 x 73 cm, which was auctioned at Hôtel Drouot, Paris, 13 March 1912, lot 53.

This painting suffered minor damaged by shrapnel following a bomb explosion in the South of France during the war on 15 August 1944. The canvas was relined in 1984 to address the damaged sail.

This work will be included in the forthcoming catalogue raisonné, under no. AM-05-004





Paris, Grande Serre de l'Alma, Cours-la-Reine, 21^e Salon des Indépendants, March-April
1905, p. 172, no. 2902



— 172 —

METCHNIKOFF (Olga), né en Russie. — 18, rue Dutot, Paris.

- *2889 Autour du piano.
- *2890 Silhouette de faucheur.
- *2891 Jardin en automne.
- *2892 Vue prise du deuxième.
- *2893 Étude d'expression.
- *2894 Commencement d'automne.
- *2895 Fin d'automne.
- *2896 Étude d'homme.

METHEY (André), né à Laignes (Côte-d'Or). — 3, rue du Maine, Asnières, et 114, faubourg Saint-Honoré (galerie Druet), Paris.

- 2897 Vitrine contenant collection de grès d'art.
- 2898 Vitrine contenant collection de grès d'art.

METZINGER (Jean). — 160, rue du Faubourg-Saint-Martin, 160.

- *2899 Marine (Caivados).
- *2900 Paysages (Alpes-Maritimes).
- *2901 La tour de Batz.
- *2902 Port du Croisic.
- *2903 Baie d'Arromanches.
- *2904 Paysage (Loire-Inférieure).
- 2905 Portrait de M. G.
- *2906 Etude.

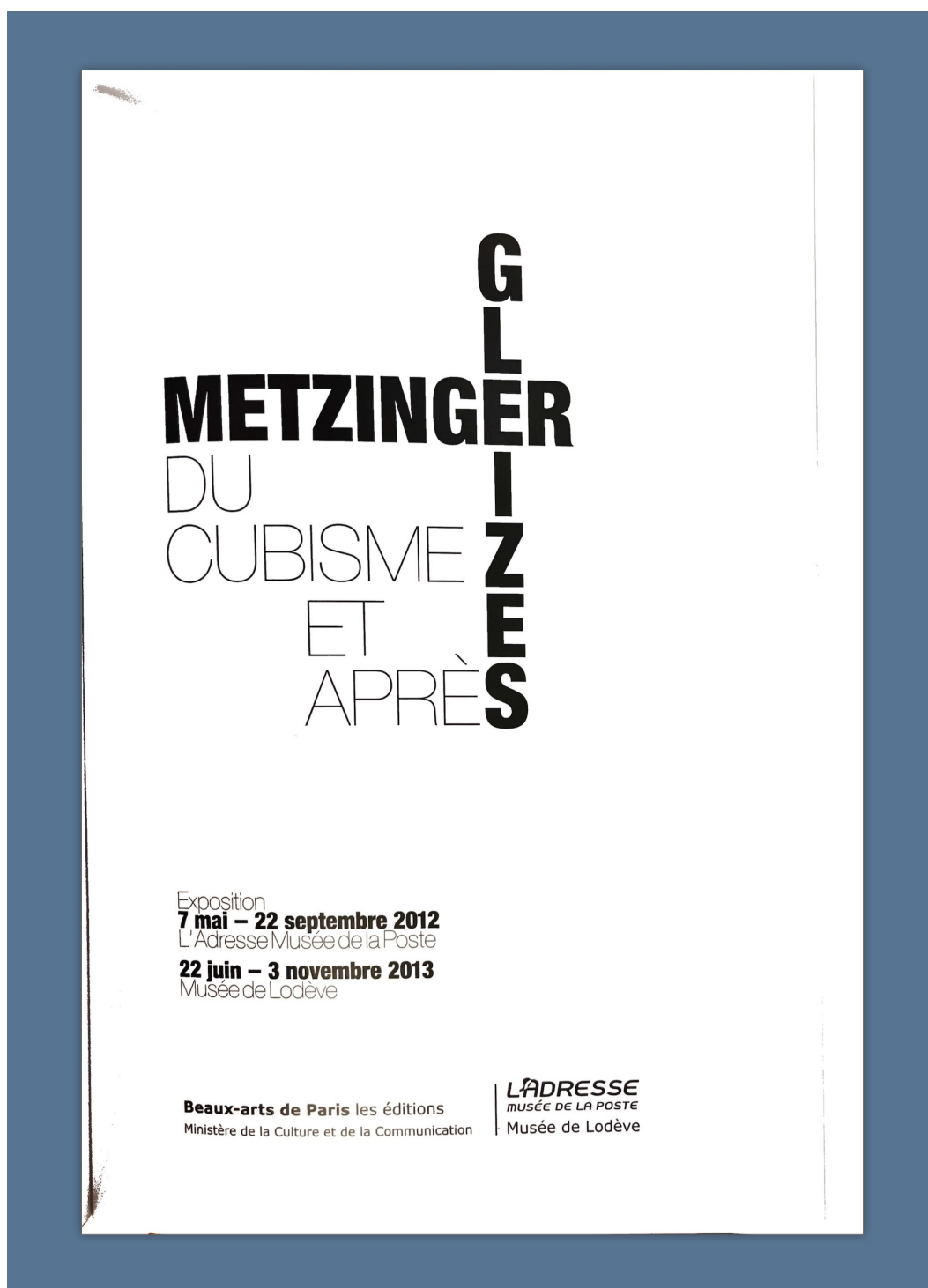
Paris, Grande Serre de l'Alma, Cours-la-Reine, 21^e Salon des Indépendants, March-April
1905, p. 172, no. 2902





Paris, Musée de la Poste and Musée de Lodève, *Gleizes, Metzinger, du Cubisme et après*, May 2012-November 2013 (illustrated in color, p. 57)





Paris, Musée de la Poste and Musée de Lodève, *Gleizes, Metzinger, du Cubisme et après*, May 2012–November 2013 (illustrated in color, p. 57)





Jean Metzinger, *Port du Croisic*, 1905, huile sur toile, 65 x 92 cm, collection particulière.

METZINGER | 57

Paris, Musée de la Poste and Musée de Lodève, *Gleizes, Metzinger, du Cubisme et après*,
May 2012-November 2013 (illustrated in color, p. 57)





⋮

1883–1956 – French

Port du Croisic

[Overview](#)
[Description](#)
[Provenance](#)
[Exhibition](#)
[Sale Details](#)
[Art](#)

23 October 2014 *about 11 years ago*

Christie's Paris

Art Moderne – [Lot 00005]

est. 350,000 - 450,000 EUR **361,500** EUR ©

est. 442,981.90 - 569,548.16 USD

457,537.02 USD ©

Year of Work 1905

Medium oil on canvas

Size Height 65 x Width 92 cm.
Height 25.591 x Width 36.22 in.

Misc signed

Object Type Paintings





Jean Metzinger
LE CYCLISTE

oil and sand on canvas
Height 100 x Width 81 cm.
Height 39.37 x Width 31.89 in.
1912

04 February 2020 almost 6 years ago

Sotheby's London

Impressionist, Modern & Surrealist Art Evening Sale – [Lot 00005]

est. 1,500,000 - 2,000,000 GBP

3,015,000 GBP ©

est. 1,954,142 - 2,605,523 USD

3,927,826 USD ©



Jean Metzinger
Paysage

oil on canvas
Height 81.2 x Width 99.3 cm.
Height 31.969 x Width 39.094 in.
1916–1917

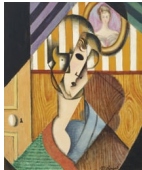
06 November 2007 almost 18 years ago

Christie's New York

Impressionist and Modern Art Evening Sale – [Lot 00050]

est. 700,000 - 1,000,000 USD

2,393,000 USD ©



Jean Metzinger
Tête de jeune fille

oil and sand on canvas
Height 73.4 x Width 60.2 cm.
Height 28.898 x Width 23.701 in.
1914

11 November 2018 almost 7 years ago

Christie's New York

Impressionist and Modern Art Evening Sale Including Property from the Collection of Herbert and Adele Klapper – [Lot 0027A]

est. 700,000 - 1,000,000 USD

1,812,500 USD ©



Jean Metzinger
Femme au chapeau

oil on canvas
Height 44.8 x Width 36.8 cm.
Height 17.638 x Width 14.488 in.
1906–1907

04 May 2010 over 15 years ago

Christie's New York

Property from the Collection of Mrs Sidney F Brody – [Lot 00027]

est. 800,000 - 1,200,000 USD

1,650,500 USD ©

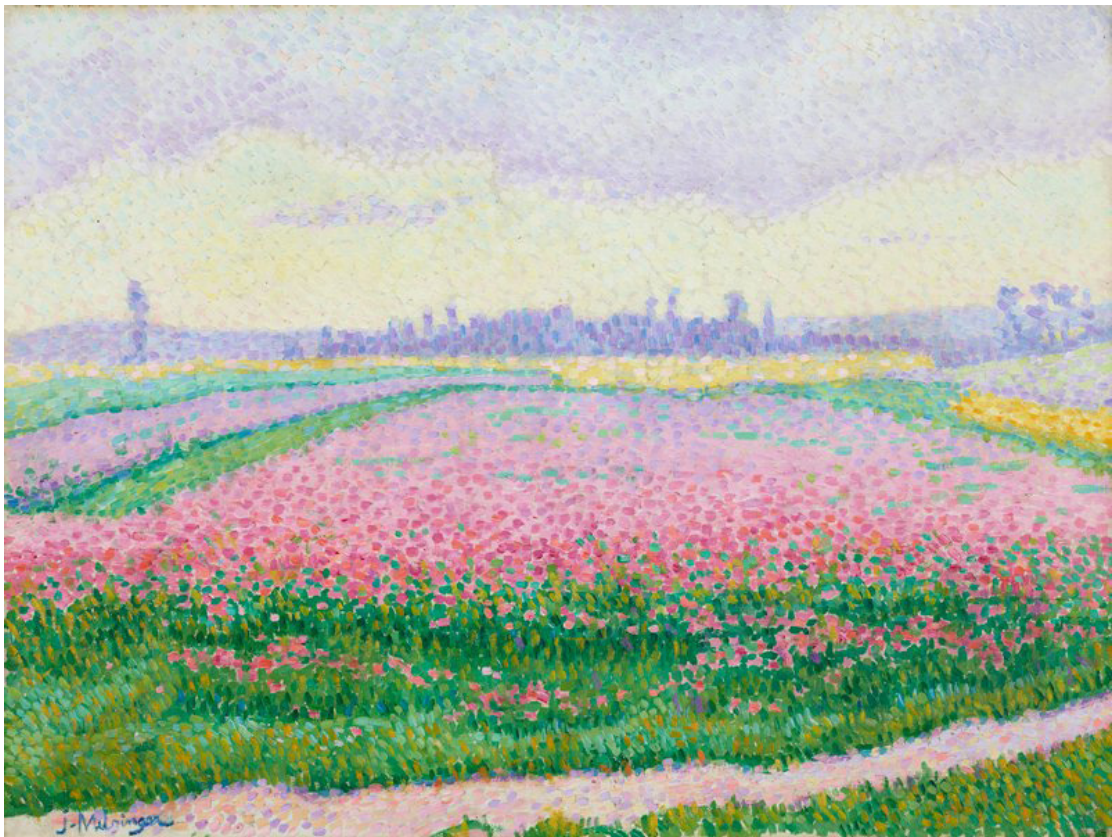


Jean Metzinger | *Fields of Flowers*

1904

Medium: Oil on canvas

Dimensions: 17^{3/8} x 23^{1/2} inches | 44.13 x 59.69 cm



Jean Metzinger | *Le Château de Clisson*

1905

Medium: Oil on canvas

Dimensions: 21^{1/2} x 29 inches | 54.5 x 73.5 cm



MUSÉE
D'ARTS
DE
NANTES

Musée des Beaux-Arts de Nantes
Nantes, France



Jean Metzinger | *Bord de mer*

1904-05

Medium: Oil on canvas

Dimensions: 25^{3/8} x 36 inches | 64.5 x 91.2 cm



Indianapolis Museum of Art at Newfields
Indianapolis, IN, United States

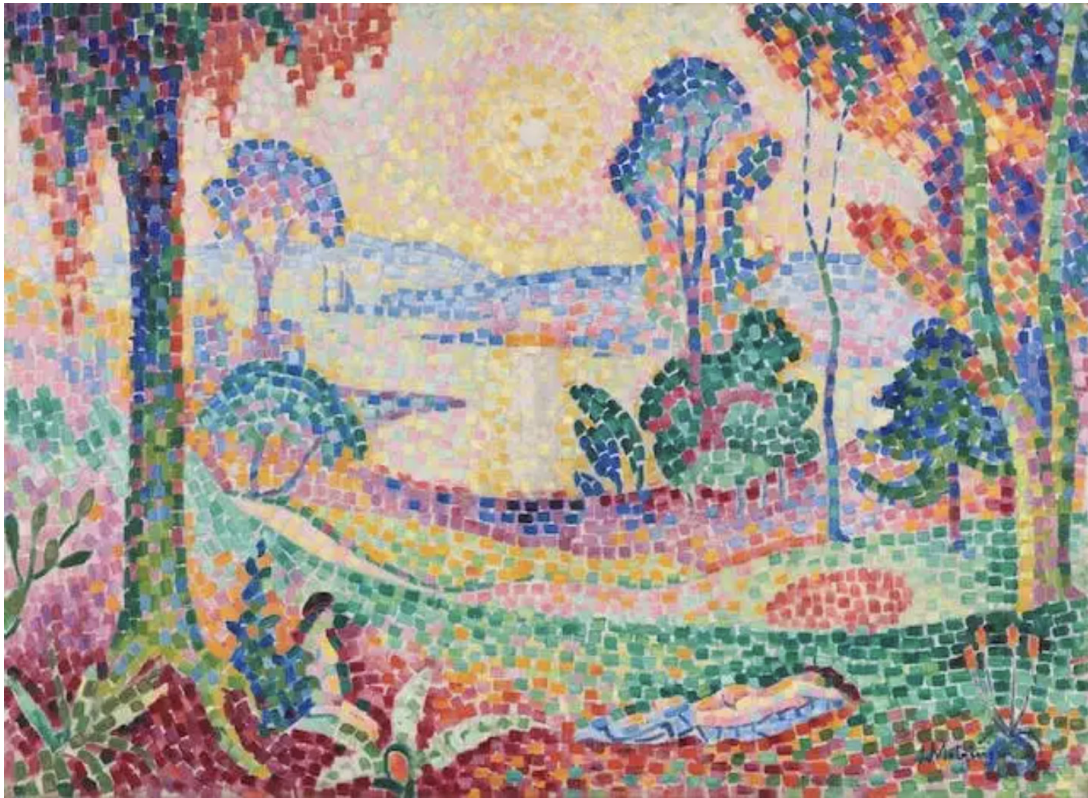


Jean Metzinger | *Coucher de soleil no. 1*

1906

Medium: Oil on canvas

Dimensions: 28^{1/2} x 39^{3/8} inches | 72.5 x 100 cm



Kröller-Müller Museum
Otterlo, The Netherlands





msrau.com | 504-826-8856